

A Liddle Good News

From the ministry of David and Katherine Liddle, April 2016



For updates by *email*, please sign up at [www.liddles.net!](http://www.liddles.net)

Feeling at home in Germany ...

We've been living in Germany for more than four years now. Our apartment lies in the village just visible in the background of the photo at the top. Jonathan and Caleb attend school at the Dietrich Bonhoeffer Gymnasium, in a town about 20 minutes away over the hills to the right. The offices where we spend our time serving Wycliffe are in the nearby village of Holzhausen, the edge of which is in the lower left-hand corner of the picture.

Nothing to write home about?

I spend my time at work maintaining the computer systems and services that the Wycliffe offices in Europe need to send members to "the field" and sustain them there. From wireless systems to file servers to secure remote access, I ensure that everything runs smoothly and stays up-to-date. It's pretty routine work—other projects and events only come around 3-4 times a year. The better I do my job, the less often I see or hear from the people I serve and the more seldom systems need my attention. Consequently, I have less news to pass on to you. Doesn't *that* make for an awkward situation?

Scotty, I need more Wi-Fi!

Wycliffe Germany is close to the end of a massive construction and renovation project to expand and improve their facilities, so that they can provide exceptional hospitality to small groups and conferences. These days, nothing says "Welcome!" better than fast, reliable Internet access. (Admit it—you ask about it, too.) To accomplish that, my colleague and I will be more than doubling the number of

access points on the center to cover the guest rooms, meeting rooms, and café in the new building.

Shh!

Also at the Wycliffe center is a library that the casual visitor is likely to overlook. For more than two years now, Katherine has been spending a few days each week overseeing its collection. Together with a few other women, she makes more than 30,000 books and articles available to linguists and translators who are working from Germany, are visiting, or who are receiving their initial training in language-related subjects.

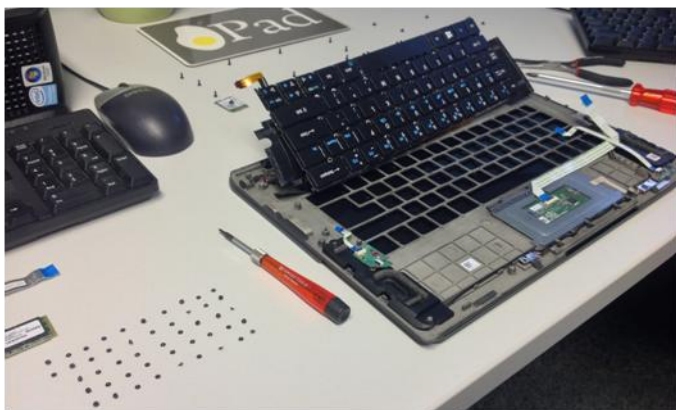
Working together again?

Katherine and I once worked together doing language survey in Africa. Now there's an opportunity for our roles to meet again as the library modernizes itself and makes the catalog available on the Internet to people who live away from the Wycliffe center. If everything goes as hoped this spring, then I will help Katherine and the library staff by creating a server that they can use to manage and share the library's resources in a way that's easier for everyone to use.

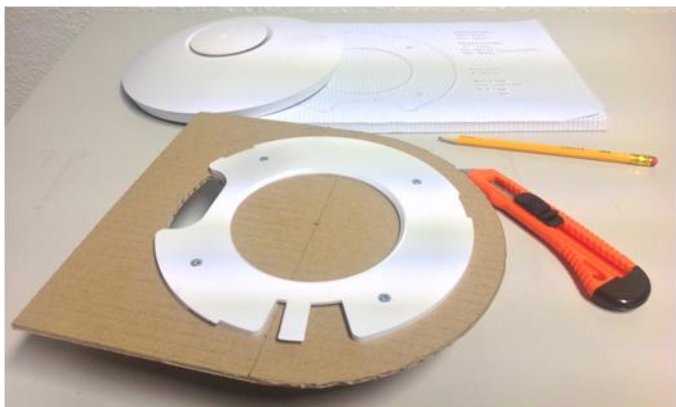
We cherish your prayers and support!

Solomon wrote, "Unless the LORD builds a house, the work of the builders is wasted." (Psalm 127:1) With your prayers for our lives and for our work, and with your financial support for our daily needs, you help ensure that our efforts are not wasted. May the Lord honor you for your faithfulness!

David, for Katherine, Jonathan, and Caleb



No one really hopes that I will need to take repairs this far!



A cardboard mockup of the access point mounts I'm designing.



Hamming it up on a model of the Alpsee Coaster on vacation.



The main room of the library, for now. Katherine's back there, but she likes to hide!



The future library office, part of all the renovation work. A view!



Visiting Neuschwanstein with David's mom in the summer.

Contact Information

David and Katherine Liddle
Westerwaldstrasse 36
57299 Burbach
Germany
david-katherine_liddle@wycliffe.org
www.liddles.net



Giving Information

Wycliffe Bible Translators
PO Box 628200
Orlando FL 32862-8200
1-800-992-5433
info_usa@wycliffe.org
www.wycliffe.org/partner

To give to our Wycliffe ministry by mail, please make the check payable to Wycliffe and indicate a preference for the Liddles, 281600.